

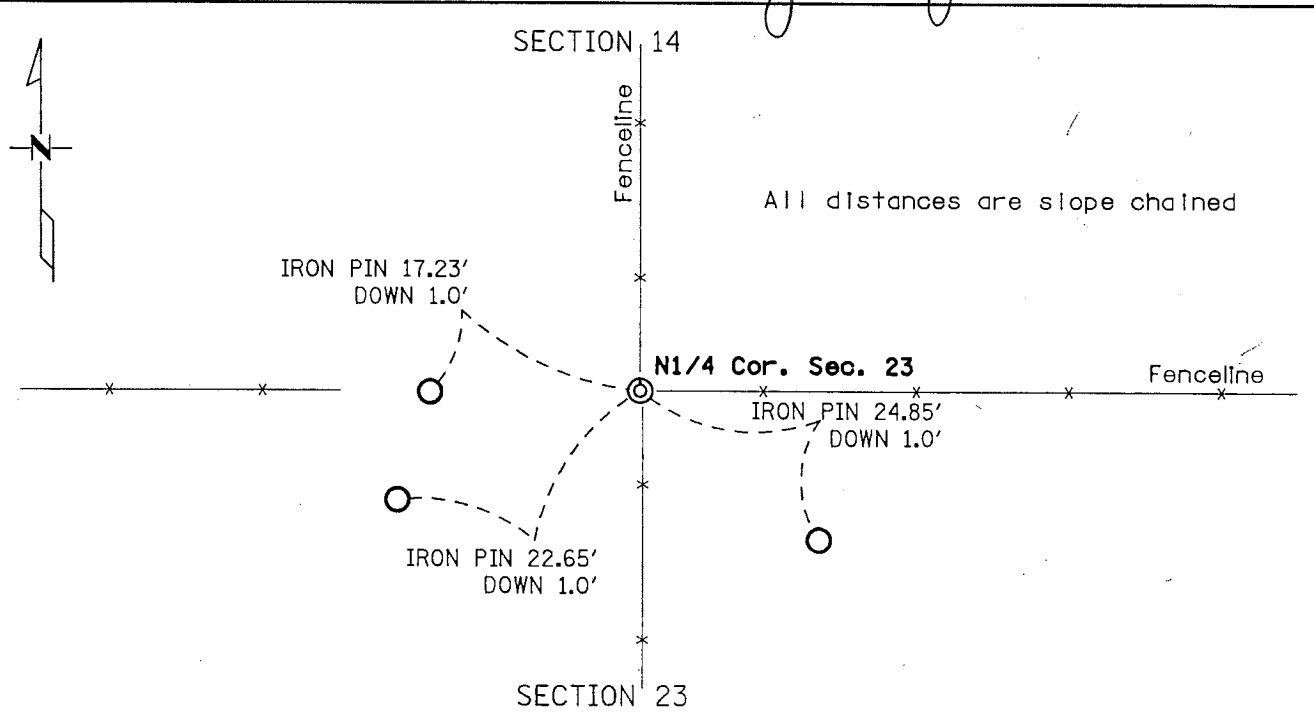
# CERTIFICATE OF LOCATION OF GOVERNMENT CORNER

NORTH QUARTER Corner of Section 23, Township 107, Range 41  
5th Principal Meridian, State of Minnesota, County of MURRAY

At the corner location shown on the sketch:

- On NOV 19, 2009 found an Minnesota Dept. of Transportation Aluminum Capped  
DATE  
Iron Monument.
- left monument as found     lowered monument     removed monument (explain)
- On MAR 8 2011 placed a \_\_\_\_\_  
DATE

*James V. Johnson*



Statement of evidence for this corner location is on back of this page.

I hereby certify that this document was researched and prepared by me or under my direct supervision.

Signature *Matthew Schlager*      Date 03-02-2011      License No. 24640  
 Title:     Land Surveyor     Professional Engineer     County Surveyor     County Engineer

## Certificate of Location of Government Corner

North Quarter Corner, Section 23, Township 107 North, Range 41 West

February 2011      Please note that the correct monument for this corner is an Aluminum capped iron monument. This certificate corrects the previous Certificate dated May 6, 2010.

November 2009      A Mn/DOT survey crew, (crew chief Jeff Balbach) found the Minnesota Department of Transportation Cast Iron Monument set by Duane Bonnema in 1989. The chain ties were updated.

For a more complete history of this corner, refer to the Certificate of Location of Government Corner Document filed with the Murray County Recorder on November 15, 1989.